

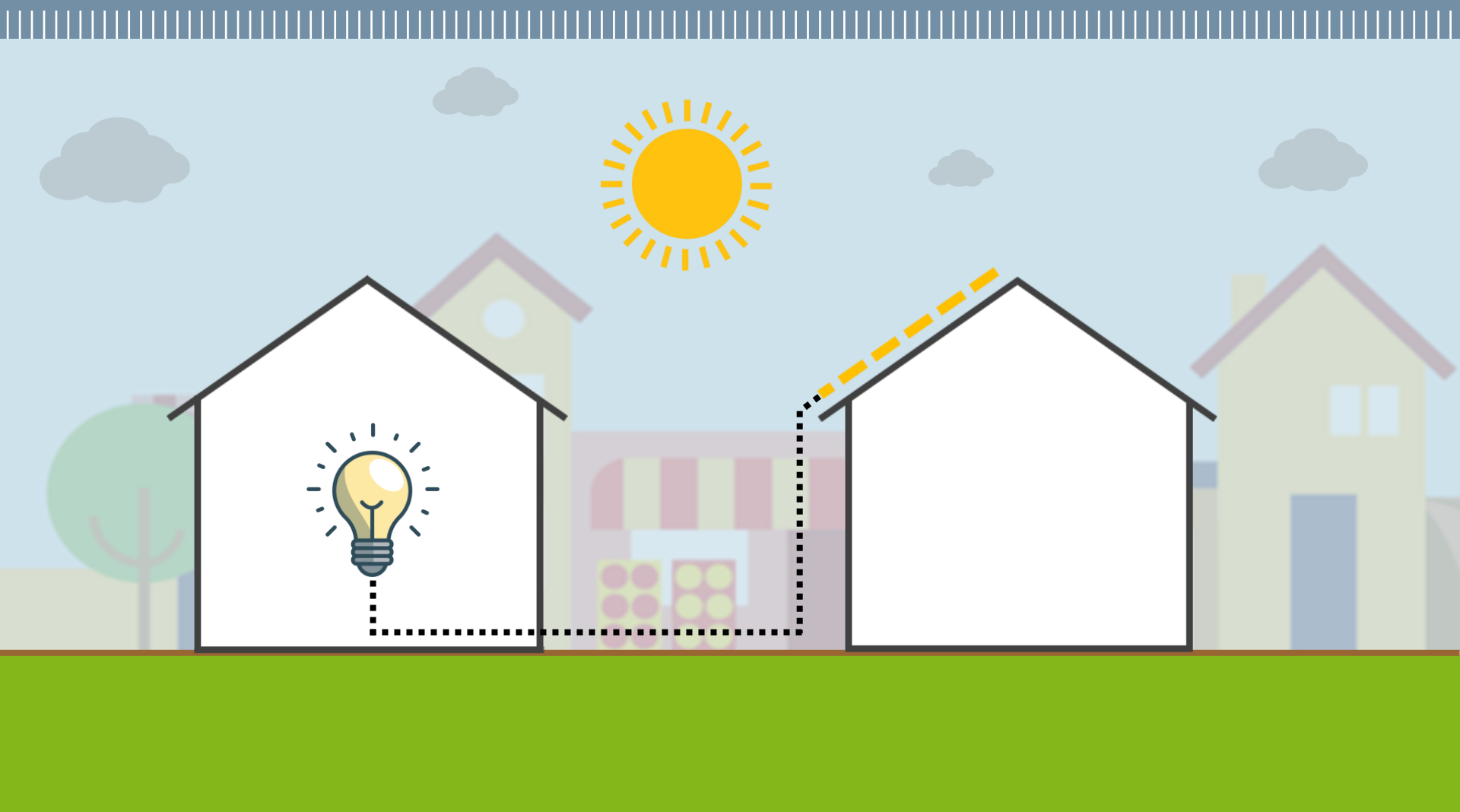


POLITECNICO
MILANO 1863

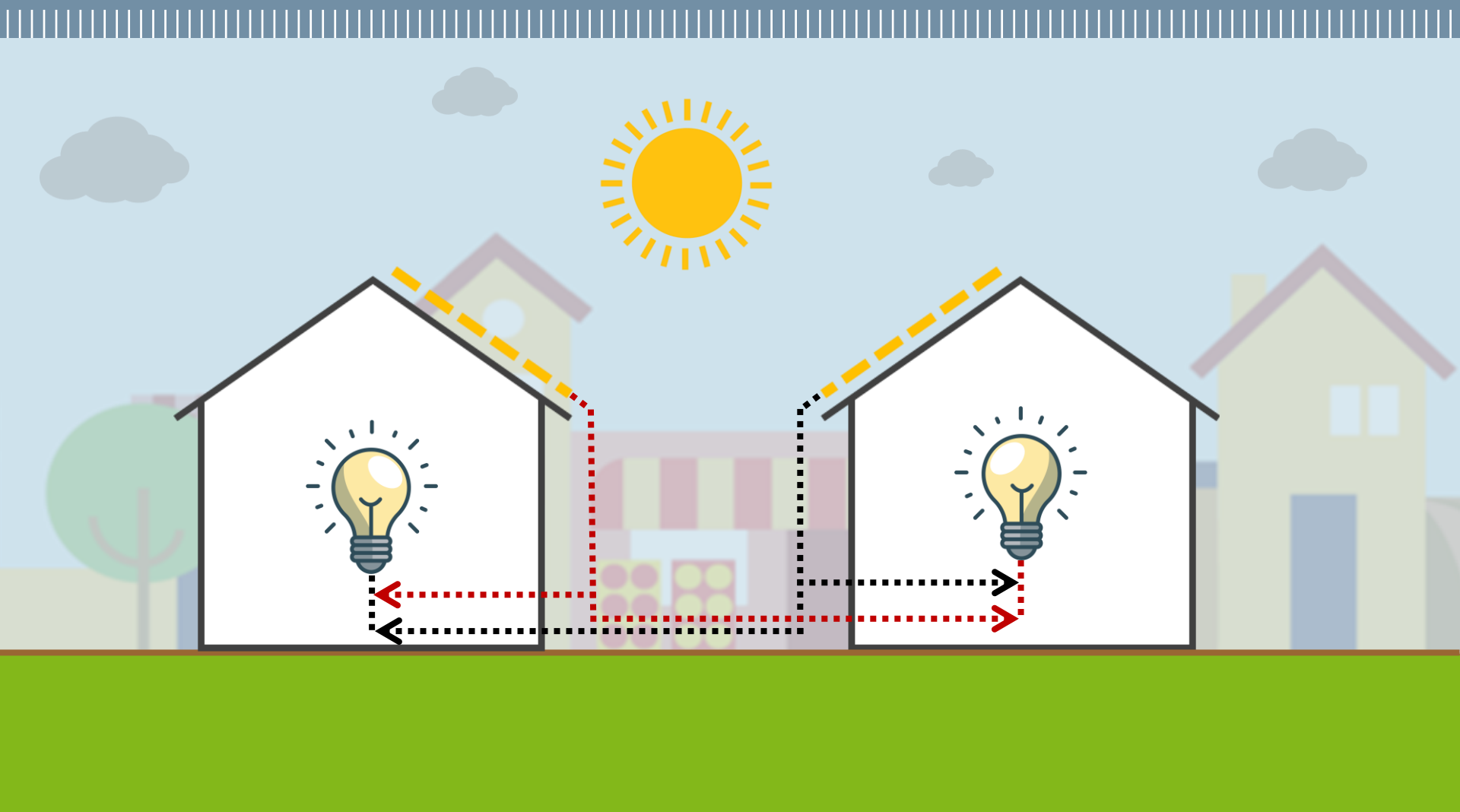
Energy communities: esperienze in attesa del recepimento normativo

Francesco Causone – francesco.causone@polimi.it
Politecnico di Milano, Dipartimento di Energia

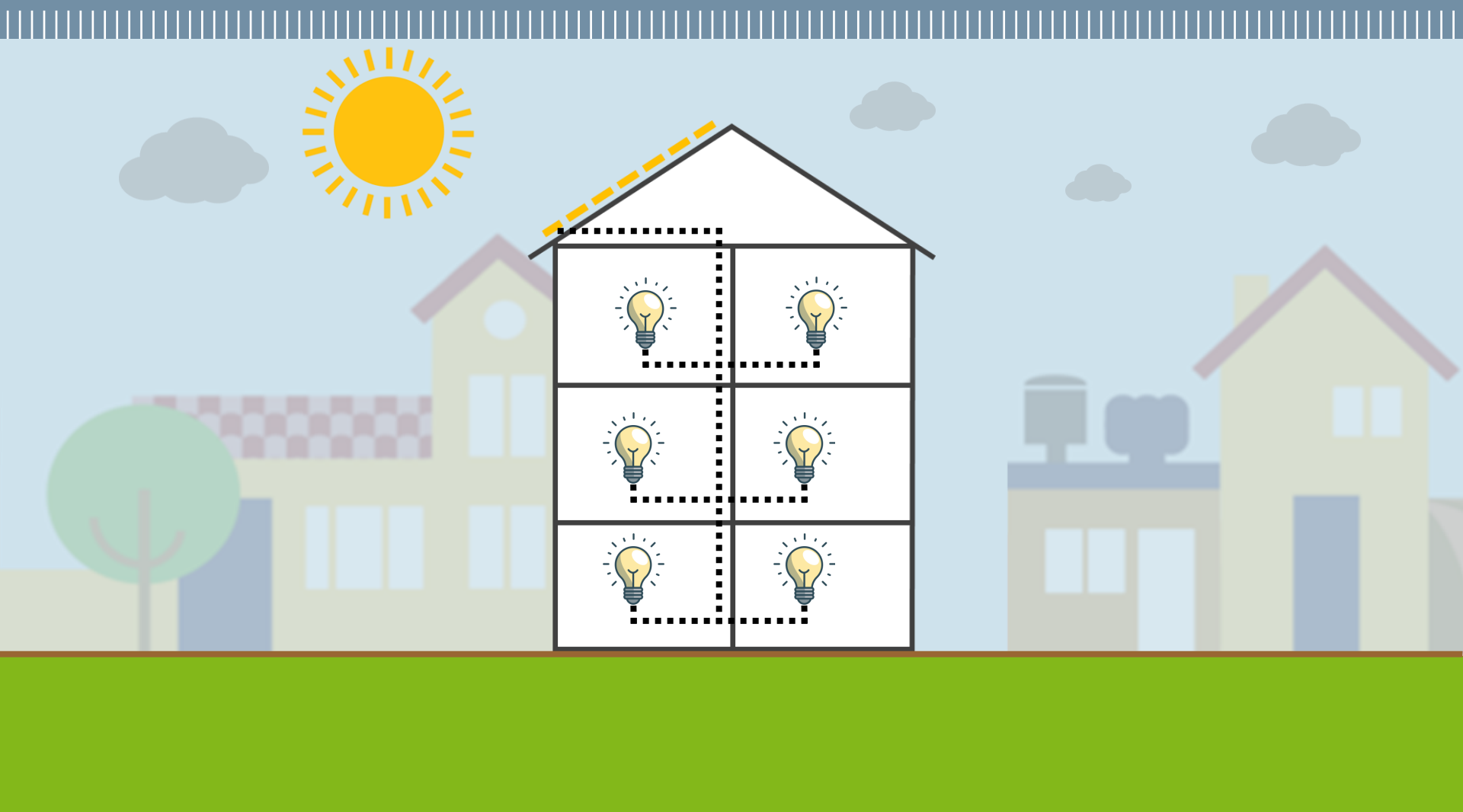
Schema 1



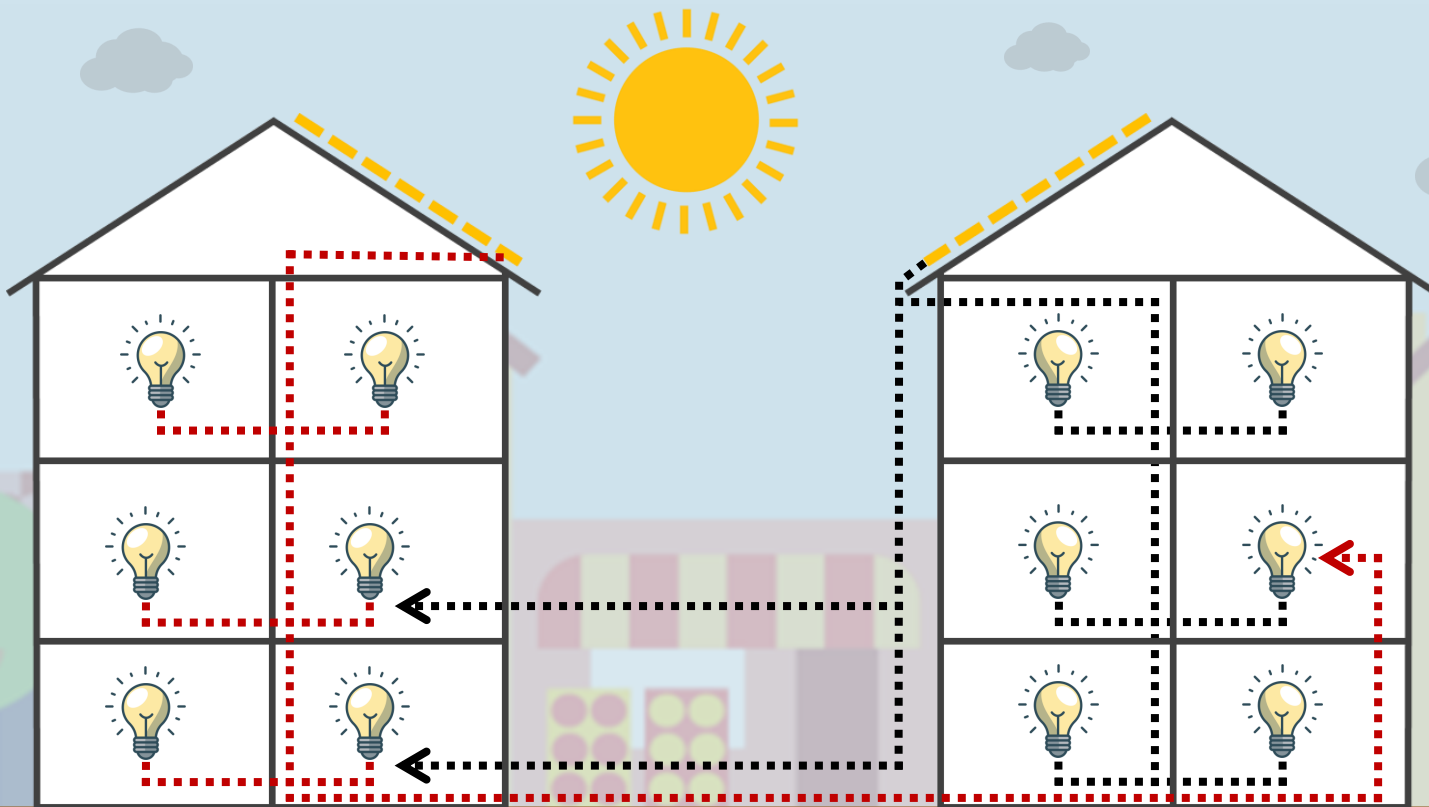
Schema 2



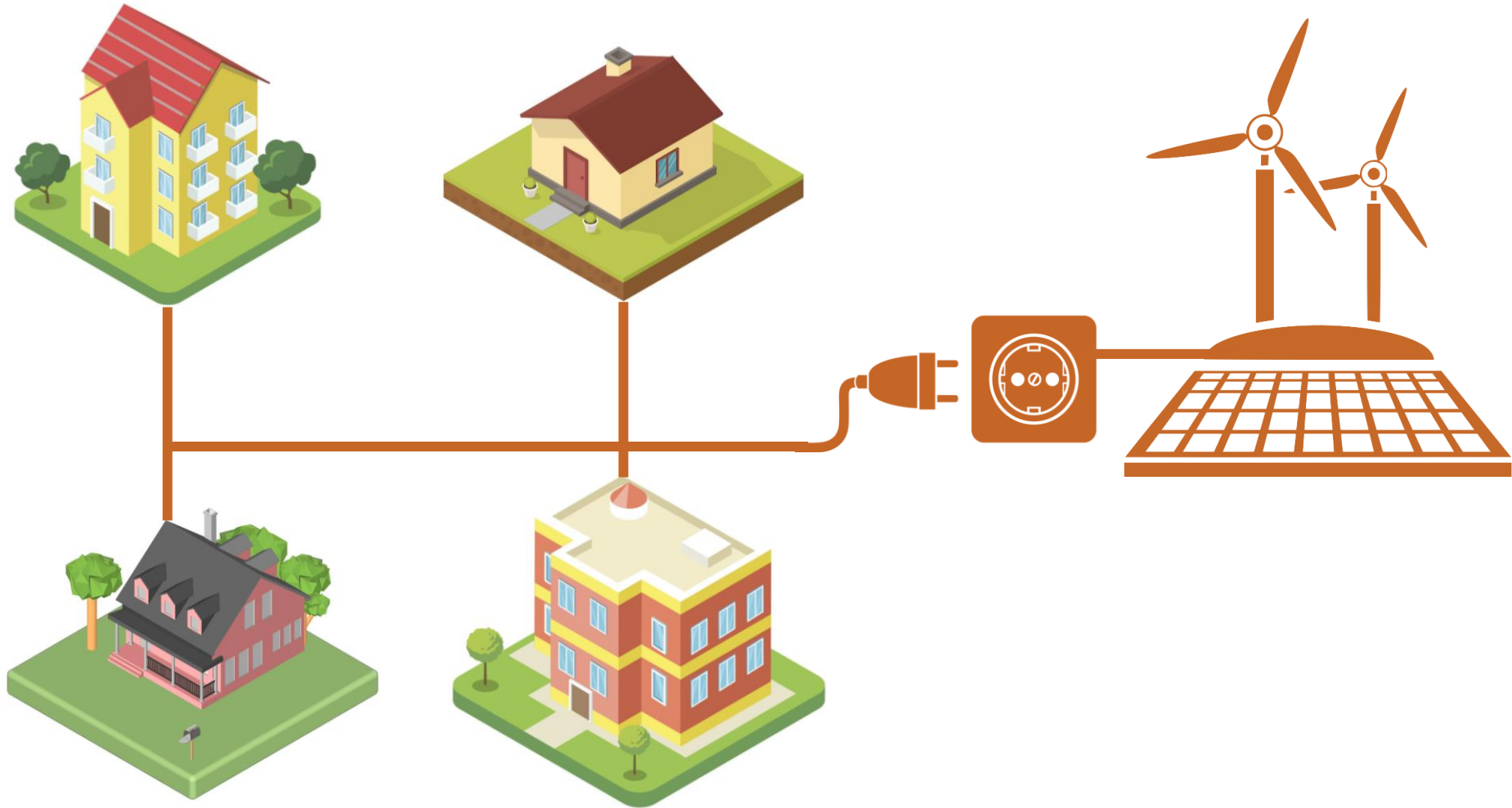
Schema 3



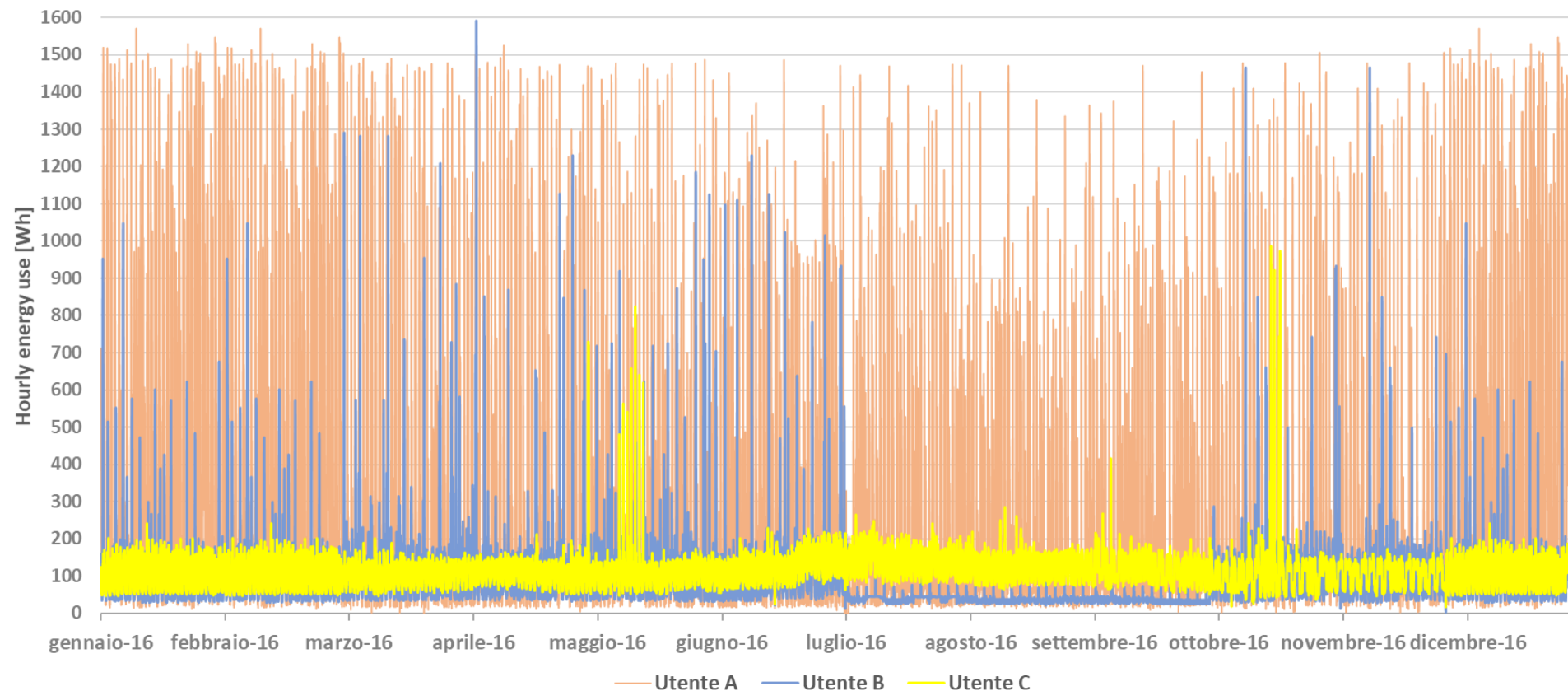
Schema 4



Schema 5



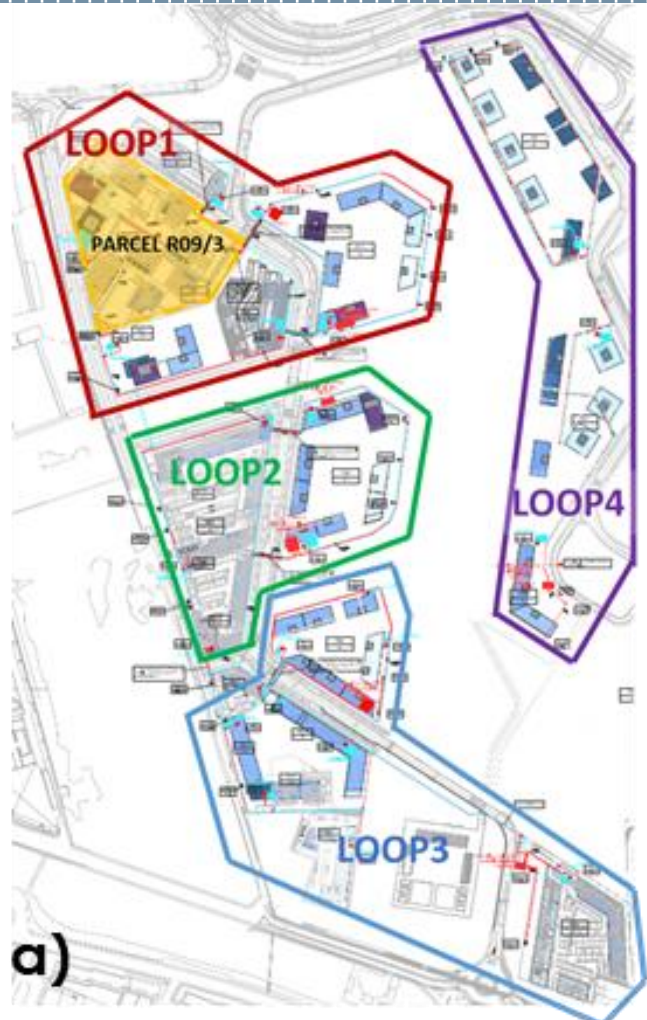
Alcuni profili d'uso elettrico residenziale



Caso di studio 1: Merlata Smart Grid, Milano

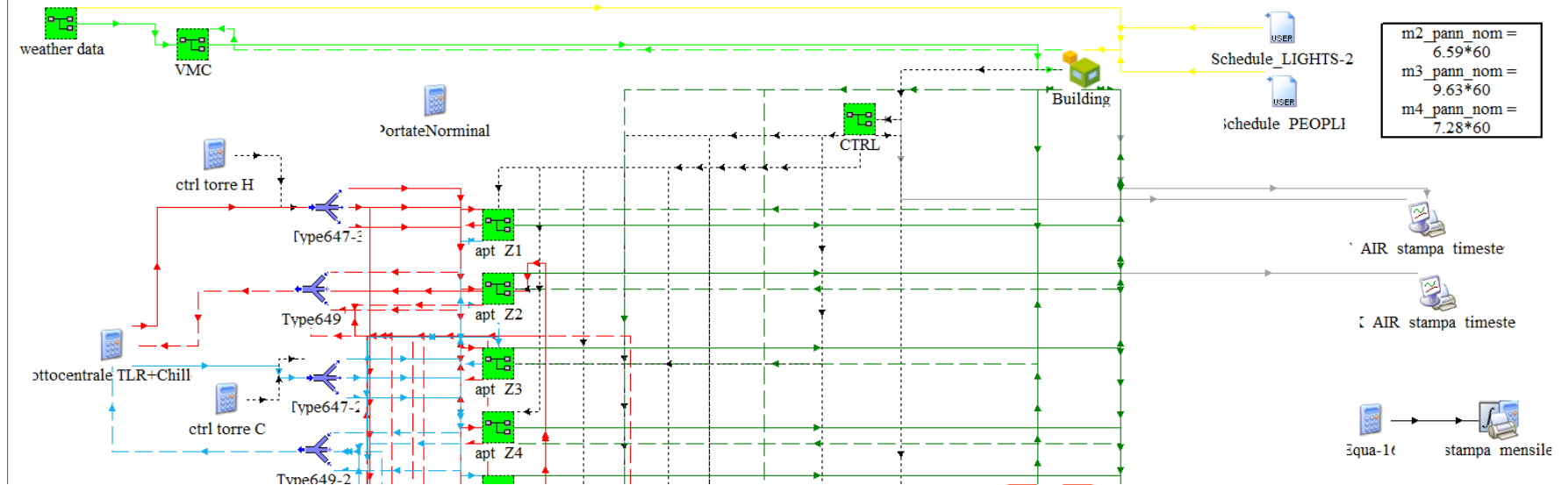


Caso di studio 1: Merlata Smart Grid, Milano

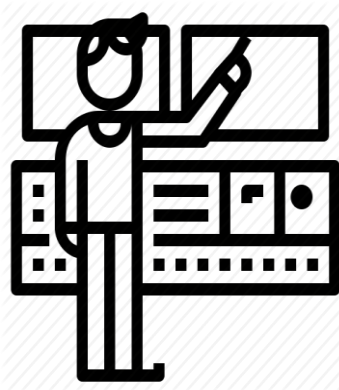


- 920 000 m², 4 500 appartamenti, 1 scuola, 1 centro commerciale e altri servizi
 - Rete di tele-raffrescamento distrettuale (4 loop)
 - 13 pozzi di estrazione /14 pozzi di re-immissione
 - Chiller e free cooling
 - Rete di teleriscaldamento comunale
 - Sistemi a bassa exergia
 - Solare fotovoltaico
- In previsione:
- EMS per Blocco R09/3
 - Rete di trasporto elettrica locale/comunale
 - Accumuli di quartiere

Caso di studio 1: Merlata Smart Grid, Milano



Monitoraggio



Gestione



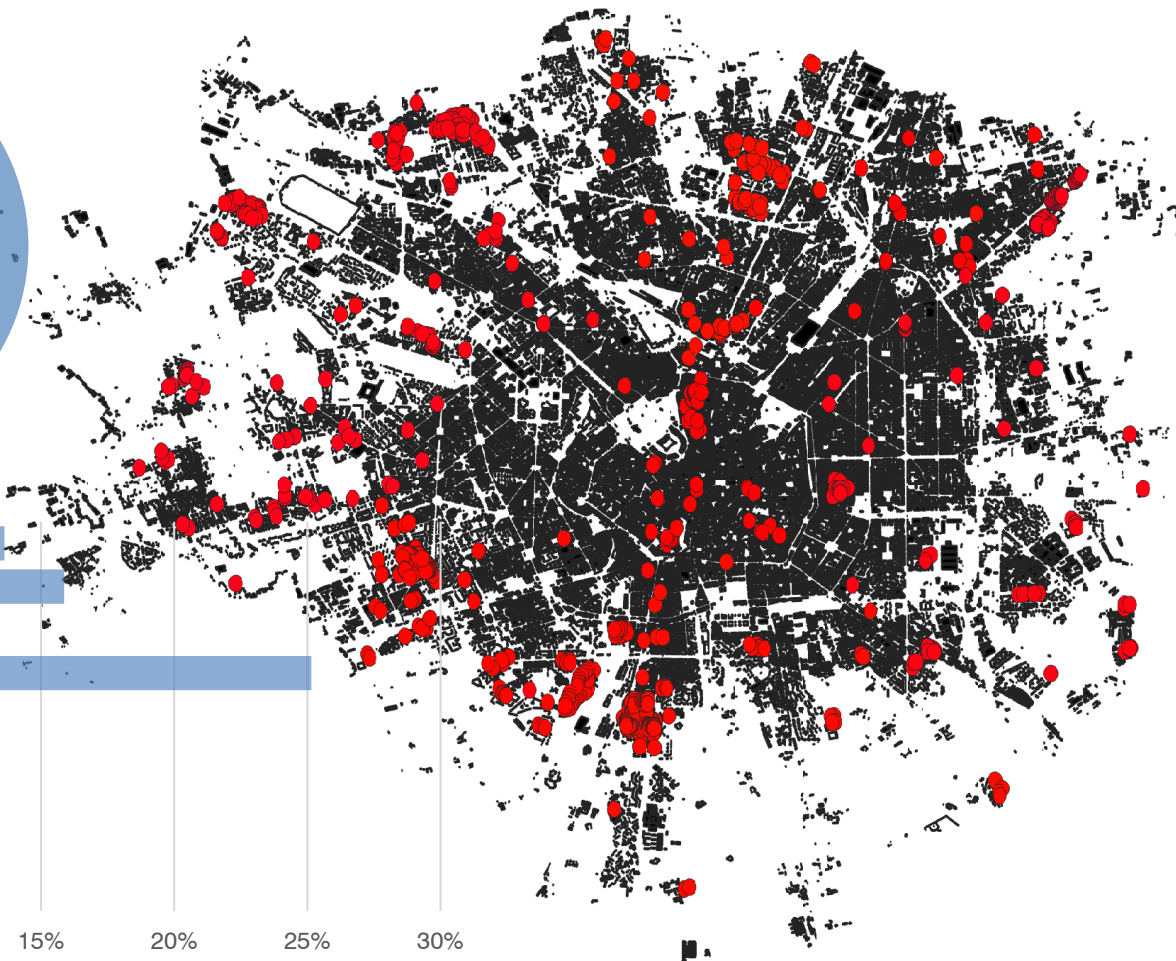
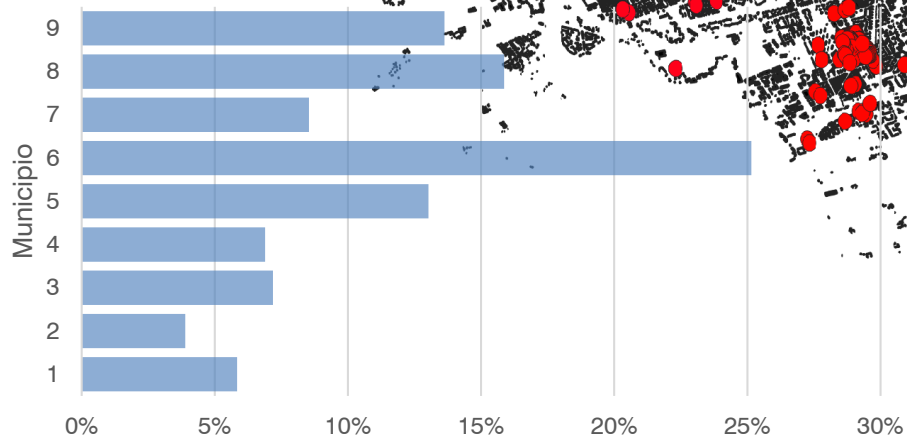
Ottimizzazione



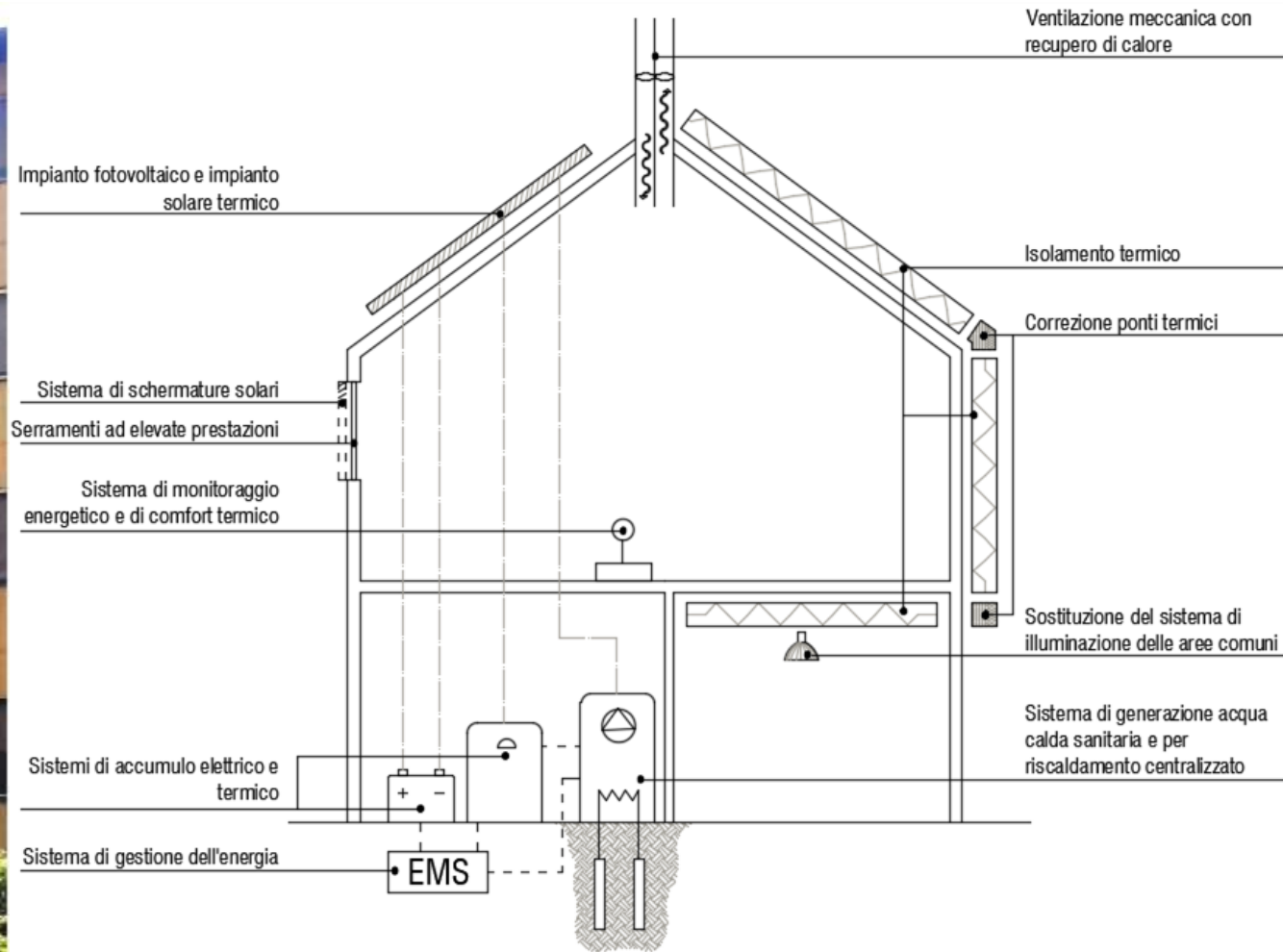
Trading

Caso di studio 2: ERP, Milano

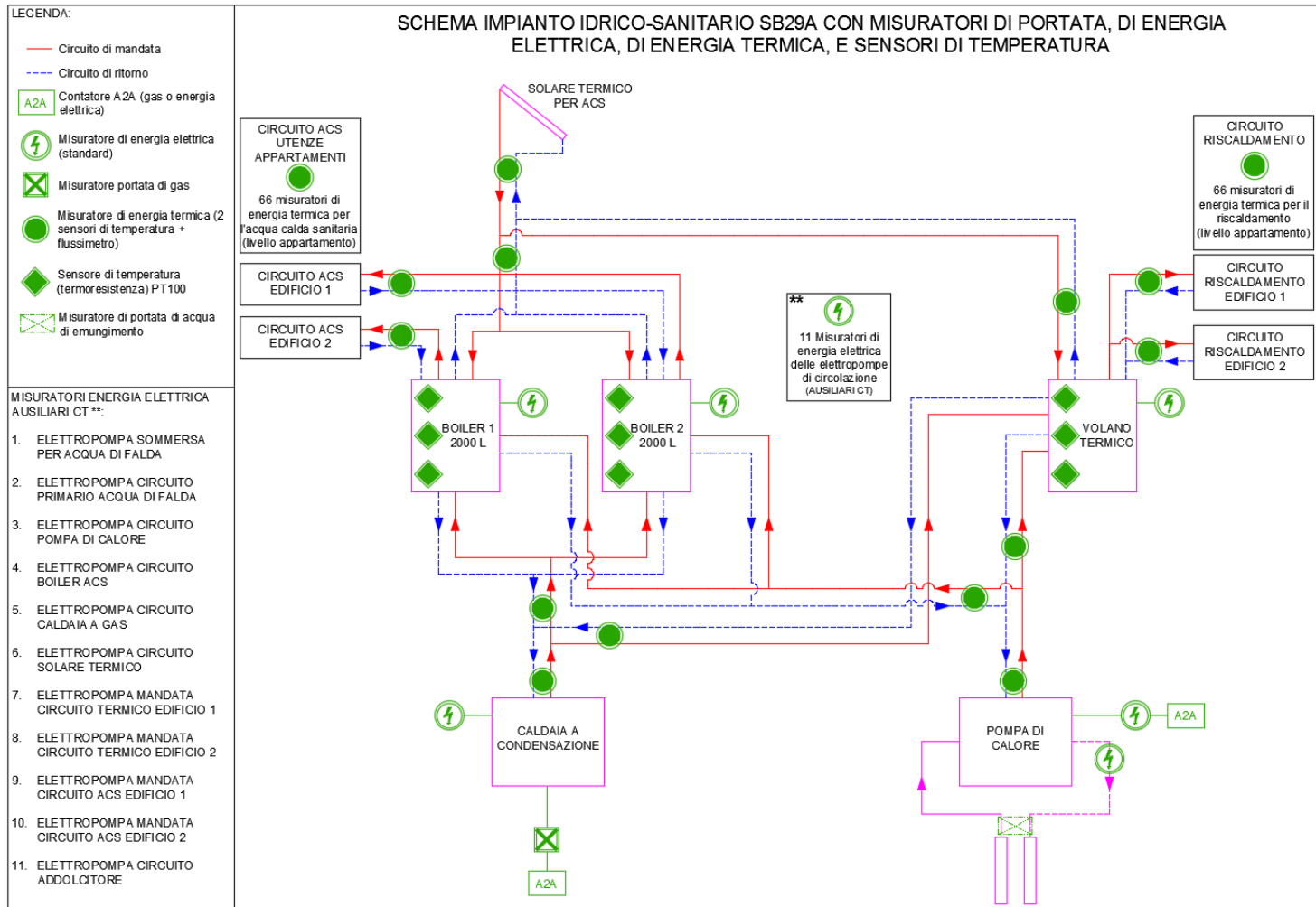
670
EDIFICI



Caso di studio 2: ERP, Milano

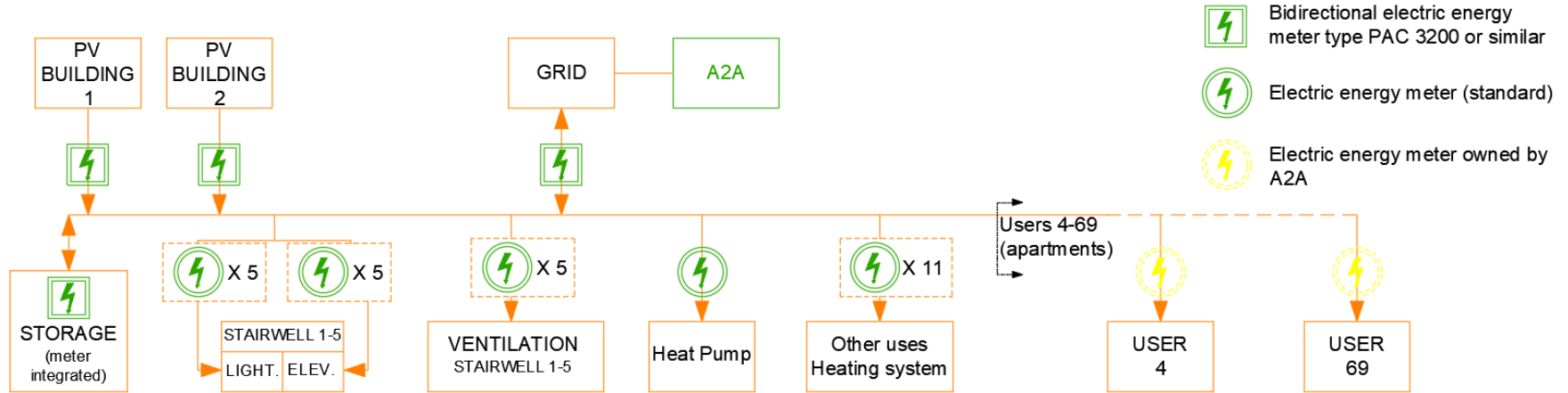


Caso di studio 2: ERP, Milano

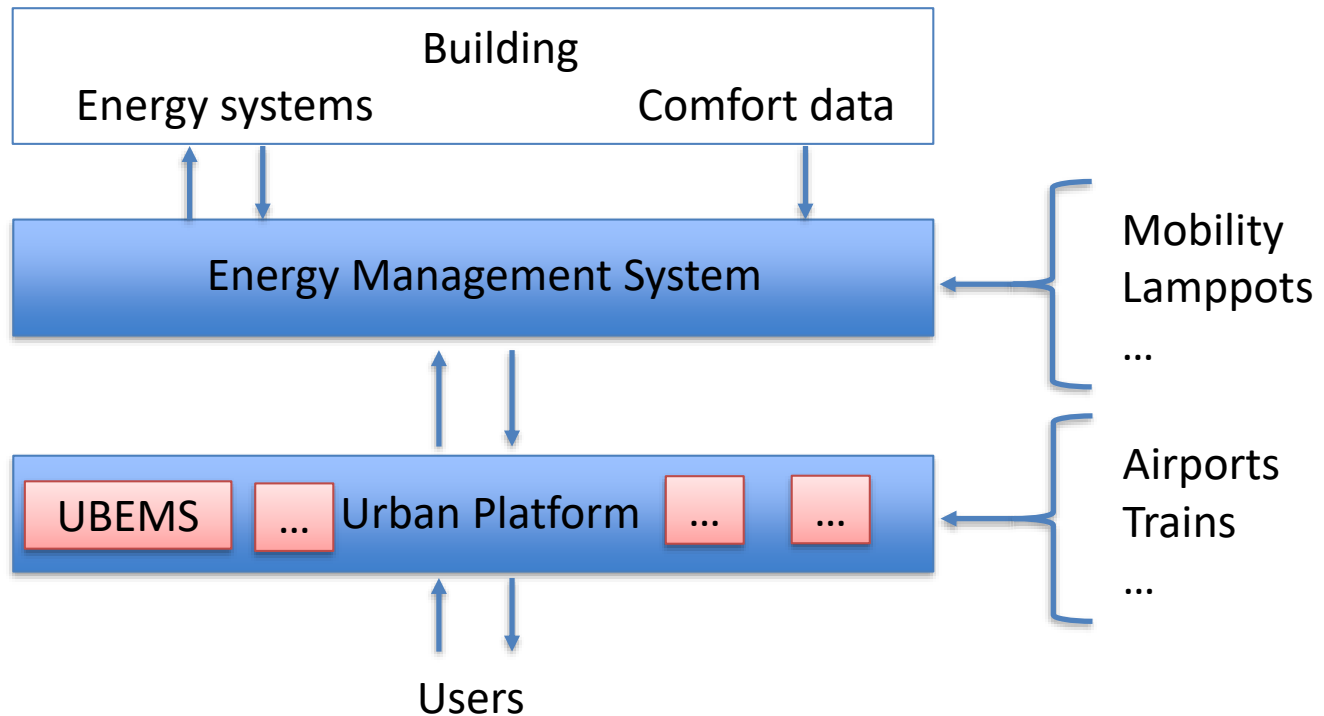


Caso di studio 2: ERP, Milano

ELECTRIC ENERGY METERS SCHEME SB29A BUILDING



Caso di studio 2: ERP, Milano



Grazie per l'attenzione

Francesco Causone – francesco.causone@polimi.it
Politecnico di Milano, Dipartimento di Energia